

SLICOM AERO BU Clermont Ferrand



Company information

Company official name: SLICOM AERO

legal : Société par actions simplifiée

Ape code : 2562B

Siret number : 433 936 309 00023

Capital : 6 937 500 €

TVA : FR 69 433 936 309

Turnover : 13,2 M€

Adress : Z.I. Aéronautique Sud, 149 Av du Brézet, 63100 Clermont-FD

Tel : 0033 (0) 4 73 83 80 60

Fax : 0033 (0) 4 73 83 80 61

Internet : www.slicom-group.com

Mail : contact@slicom-group.com

Activity

- ❖ Aero structures repair and maintenance
- ❖ Aeronautic and spatial large parts machining
- ❖ Sheet metal parts and subsets manufacturing

Used material

Aluminum, inox

Qualifications & Agreements

ISO 9001, EN 9100, EN 9110, PART 145, AQAP 2120

Material supply : AIRBUS, EADS-SOGERMA

Heat treatment : AIRBUS, EADS-SOGERMA

Laser cutting(alu, titanium, inox) : EADS-SOGERMA

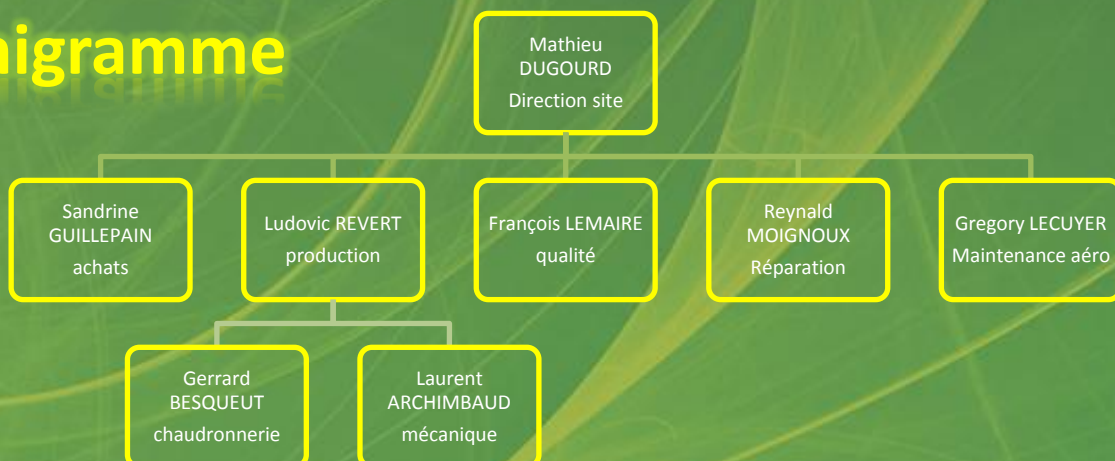
welding : classe 1 (1TTI2A3)

Special processes : AIRBUS, BOMBARDIER, CAC, DASSAULT, EADS-SOGERMA, EUROCOPTER, RATIER FIGEAC...

Main clients

EADS-Composite Atlantic Limited (), FIGEAC-AERO, EADS-SOGERMA, ALCAN, AUBERT & DUVAL, CRYOSPACE, DGA (AIA), EXAMECA, LATECOERE, MECAHERS, NSE, RATIER-FIGEAC, REGIONAL-CAE, MBH...

Organigramme



Infrastructure

- Workshops area: 5000m²
- handling
 - 5 tons crane
 - 4,5 tons forklift

capacity

- machining: 10000 hours
- Sheet metal working : 30000 hours
- Repair : 30000 hours

processes

- Sheet metal working
 - Laser and mechanical cutting 5 axes
 - Forming, hydraulic press up to 600 tons
 - Fold , press up to 1250 tons (max length 3950 mm)
 - TIG welding
 - Heat treatment up to 1020x650x190 0 mm
- Large size machining
 - Up to 5 axes (6700x1925x500 mm)
 - Up to 15000 rpm

Special processes

- Painting with pressurized cab(6870x4000x3000mm)
- CMM